

Monmouth County, New Jersey

Urban Profile

(Asbury Park City, Freehold Borough, Long Branch City, Neptune Township, and Red Bank Borough)



Prepared by

Holleran

January 2010

Update to 2006 Profile

TABLE OF CONTENTS

A. Reading the Results.....	3
B. Population Statistics.....	4
C. Household Statistics.....	8
D. Income Statistics.....	11
E. Employment Statistics.....	14
F. Mortality Statistics.....	15
G. Maternal Health and Birth Statistics.....	17
H. Communicable Disease Statistics.....	20
I. Child Health Statistics.....	23
J. Crime Statistics.....	25
K. Substance Abuse Statistics.....	29
L. Education Statistics.....	30

A. Reading the Results

For all the data provided, the most recently published data at the municipality level was used. For example, if 2009 data are available at the national and state level, but only 2008 data are available at the municipality level, then 2008 data are utilized. National, state, county, and municipality comparisons were attempted for each chart, but data across all four levels was not always attainable. Additionally, footnotes have been used to indicate when particular municipality data could not be found.

DEFINITIONS:

Household: A household includes all the people who occupy a housing unit as their usual place of residence.

ADP: Average Daily Participation is calculated by dividing total meals by the number of school days.

Seasonally Adjusted: Employment data is seasonally adjusted to remove the impact of regular events that occur at the same time every year such as the effect of cold weather on outdoor activities, the Christmas holiday, or the summer influx of youth into the labor market.

Blood Lead Level: The blood lead level is measured in ug/dL, which stands for micrograms per deciliter. This measurement is done by a technician and is then reported back to the childhood lead poisoning prevention program. These levels have been aggregated to the categories as seen on the module. Levels greater than 20 require a visit from an environmental health inspector.

B. Population Statistics

Trends in Total Population

	U.S.	New Jersey	Monmouth County	Asbury Park City	Freehold Borough	Long Branch City	Red Bank Borough	Neptune Township
2008 Estimate	304,059,724	8,682,661	642,448	16,546	11,425	32,622	11,866	28,410
Percent Change ('04 - '08)	+3.5%	-0.03%	+1.2%	-1.6%	-0.9%	+3.5%	-0.6%	+0.4%
July 1, 2004 (estimate)	293,656,842	8,685,166	635,062	16,819	11,527	31,526	11,940	28,292
2000 Census	281,421,906	8,414,350	615,301	16,930	10,976	31,340	11,844	27,690
Percent Change ('00 - '04)	+4.3%	+3.2%	+3.2%	-0.7%	+5.0%	+0.6%	+0.8%	+2.2%
1990 Census	248,709,873	7,730,188	553,124	16,799	10,742	28,658	10,636	28,148
Percent Change ('90 - '00)	+13.2%	+8.9%	+11.2%	+0.8	+2.2%	+9.4%	+11.4%	-1.6%

Data Source: U.S. Census Bureau, *Profile of General Demographic Characteristics*

Population (2000)

	U.S.	New Jersey	Monmouth County	Asbury Park City	Freehold Borough	Long Branch City	Red Bank Borough	Neptune Township
Percentage of Total Population								
Male	49.1%	48.5%	48.6%	46.9%	51.5%	48.5%	47.9%	46.6%
Female	50.9%	51.5%	51.4%	53.1%	48.5%	51.5%	52.1%	53.4%

Data Source: U.S. Census Bureau, *Profile of General Demographic Characteristics*

Population Area and Density (2000)

	U.S.	New Jersey	Monmouth County	Asbury Park City	Freehold Borough	Long Branch City	Red Bank Borough	Neptune Township
AREA (in Square Miles)								
Total Area	3,794,083.06	8,721.30	665.12	1.60	2.00	6.19	2.16	8.76
Water Area	256,644.62	1,303.96	193.18	0.17	0.00	0.97	0.37	0.54
Land Area	3,537,438.44	7,417.34	471.94	1.43	2.00	5.22	1.78	8.22
DENSITY (per Square Miles of Land Area)								
Population	79.60	1,134.40	1,303.80	11,842.00	5,501.10	6,008.60	6,639.10	3,366.80
Housing Units	32.80	446.30	510.40	5,416.70	1,915.10	2,680.90	3,055.00	1,485.40

Data Source: U.S. Census Bureau, *Census 2000 Summary File 1 (SF 1)*

Age Breakdown (2000)

	U.S.	New Jersey	Monmouth County	Asbury Park City	Freehold Borough	Long Branch City	Red Bank Borough	Neptune Township
Age (% of population)								
Under 5 years	6.8%	6.7%	6.9%	9.1%	7.8%	7.0%	5.8%	6.0%
5-9 years	7.3%	7.2%	7.6%	9.3%	6.6%	6.9%	4.3%	6.6%
10-14 years	7.3%	7.0%	7.5%	7.6%	6.1%	6.4%	4.6%	6.7%
15-19 years	7.2%	6.2%	6.2%	6.6%	7.1%	6.0%	5.0%	5.9%
20-24 years	6.7%	5.7%	4.8%	8.1%	8.0%	7.7%	6.5%	4.6%
25-34 years	14.2%	14.1%	12.2%	15.7%	17.7%	16.5%	19.5%	12.5%
35-44 years	16.0%	17.1%	18.2%	14.1%	16.6%	15.9%	15.7%	17.1%
45-54 years	13.4%	13.8%	15.0%	11.2%	11.9%	12.6%	11.9%	14.0%
55-59 years	4.8%	5.0%	5.3%	3.7%	4.2%	4.7%	4.7%	5.3%
60-64 years	3.8%	3.9%	3.8%	3.4%	3.2%	3.5%	3.6%	4.5%
65 -74 years	6.5%	6.8%	6.5%	5.3%	5.1%	6.6%	7.3%	8.1%
75-84 years	4.4%	4.8%	4.4%	4.0%	4.0%	4.7%	7.0%	5.8%
85 years and over	1.5%	1.6%	1.6%	1.8%	1.5%	1.6%	4.0%	2.8%
65 years and over	12.4%	13.2%	12.5%	11.1%	10.6%	12.9%	18.3%	16.8%

Data Source: U.S. Census Bureau, *Profile of General Demographic Characteristics*

Racial Breakdown (2000)

	U.S.	New Jersey	Monmouth County	Asbury Park City	Freehold Borough	Long Branch City	Red Bank Borough	Neptune Township
RACE (<i>Race alone or in combination with one or more races</i>)								
White	75.1%	72.6%	85.7%	26.7%	73.9%	71.5%	69.9%	57.3%
Black or African American	12.3%	13.6%	8.7%	66.4%	16.6%	20.0%	21.2%	39.9%
Asian	3.6%	5.7%	4.4%	1.0%	2.9%	2.1%	2.6%	1.5%
American Indian / Alaska Native	0.9%	0.2%	0.5%	1.2%	1.2%	0.8%	0.9%	0.9%
Native Hawaiian or Other Pacific Islander	0.1%	0.0%	0.1%	0.4%	0.1%	0.2%	0.2%	0.2%
Some other race	5.5%	5.4%	2.5%	10.2%	9.0%	9.9%	7.8%	2.9%
HISPANIC OR LATINO RACE								
Hispanic or Latino (<i>of any race</i>)*	12.5%	13.3%	6.2%	15.6%	28.1%	20.7%	17.1%	5.6%

*Hispanic/Latino residents can be of any race. For example, "White Hispanic or Black/African -American Hispanic."

Data Source: U.S. Census Bureau, *Profile of General Demographic Characteristics*

C. Household Statistics

Household Statistics (2000)

	U.S.	New Jersey	Monmouth County	Asbury Park City	Freehold Borough	Long Branch City	Red Bank Borough	Neptune Township
HOUSEHOLD by TYPE								
Total households	105,480,101	3,064,645	224,236	6,754	3,695	12,594	5,201	10,907
Family households	68.1%	70.3%	71.5%	53.1%	69.6%	57.6%	48.1%	62.4%
Female householder - no husband present	12.2%	12.6%	10.0%	26.9%	14.2%	15.9%	11.6%	15.8%
Non-Family households	31.9%	29.7%	28.5%	46.9%	30.4%	42.4%	51.9%	37.6%
Householder 65 years and older	9.2%	9.8%	9.6%	15.2%	10.6%	10.5%	15.9%	11.8%
Avg. household size	2.6	2.7	2.7	2.5	3.0	2.5	2.2	2.46
Avg. family size	3.14	3.21	3.24	3.4	3.39	3.19	2.99	3.14

Data source: U.S. Census Bureau, *Profile of General Demographic Characteristics*

Household Statistics (2000)

	U.S.	New Jersey	Monmouth County	Asbury Park City	Freehold Borough	Long Branch City	Red Bank Borough	Neptune Township
HOUSING OCCUPANCY								
Total housing units	115,904,641	3,310,275	240,884	7,744	3,821	13,983	5,450	12,217
Occupied housing units	91.0%	92.6%	93.1%	87.2%	96.7%	90.1%	95.4%	89.3%
Vacant housing units	9.0%	7.4%	6.9%	12.8%	3.3%	9.9%	4.6%	10.7%
For seasonal, recreational, or Occasional use	3.1%	3.3%	3.2%	0.6%	0.3%	5.0%	0.5%	5.6%
HOUSING TENURE								
Occupied housing units	105,480,101	3,064,645	224,236	6,754	3,695	12,594	5,201	10,907
Owner-occupied housing units	66.2%	65.6%	74.6%	19.5%	60.6%	42.4%	47.6%	65.5%
Renter-occupied housing units	33.8%	34.4%	25.4%	80.5%	39.4%	57.6%	52.4%	34.5%

Data source: U.S. Census Bureau, *Profile of General Demographic Characteristics*

Median Gross Rent (2000)

	U.S.	New Jersey	Monmouth County	Asbury Park City	Freehold Borough	Long Branch City	Red Bank Borough	Neptune Township
Monthly Rent	\$602	\$751	\$759	\$615	\$821	\$727	\$813	\$658

Data Source: U.S. Census Bureau, *Census 2000 Summary File 3 (SF 3)*

Year Housing Units were Built

	U.S.	New Jersey	Monmouth County	Asbury Park City	Freehold Borough	Long Branch City	Red Bank Borough	Neptune Township
1999-March 2000	2,755,075	48,124	4,080	0	0	131	48	42
1995-1998	8,478,975	139,421	13,312	33	35	247	231	260
1990-1994	8,467,008	158,581	15,108	49	108	392	81	328
1980-1989	18,326,847	409,978	38,325	478	444	1,290	323	1,030
1970-1979	21,438,863	462,740	35,833	961	516	1,980	346	1,121
1960-1969	15,911,903	526,740	40,748	1,201	489	2,507	825	2,708
1950-1959	14,710,149	526,732	36,509	1,322	613	2,158	771	2,428
1940-1949	8,435,768	332,806	17,209	1,216	425	1,639	848	892
1939 and earlier	17,380,053	39,670	39,760	2,484	1,191	3,639	1,977	3,408
Percentage of housing units 50 years-old and over	22.3%	14.1%	23.6%	47.8%	42.3%	37.7%	51.8%	35.2%

Data Source: U.S. Census Bureau, *Census 2000 Summary File 3 (SF 3)*

D. Income Statistics

Income Statistics (2000)

	U.S.	New Jersey	Monmouth County	Asbury Park City	Freehold Borough	Long Branch City	Red Bank Borough	Neptune Township
Median Household Income	\$41,994	\$55,146	\$64,271	\$23,081	\$48,654	\$38,651	\$47,282	\$46,250
Individuals below poverty level	12.4%	8.5%	6.3%	30.1%	12.0%	16.7%	12.0%	11.7%
Median Family Income	\$50,046	\$65,370	\$76,823	\$26,370	\$53,374	\$42,825	\$63,333	\$57,735
Per Capita Income	\$21,587	\$27,006	\$31,149	\$13,516	\$19,910	\$20,532	\$26,265	\$22,569
Families below poverty level	9.2%	6.3%	4.5%	29.3%	7.7%	13.9%	6.3%	7.6%

Data Source: U.S. Census Bureau, *2000 Census of Population and Housing*; U.S. Census Bureau, *American Factfinder (2000)*

Per Capita Income by Race (2000)

	U.S.	New Jersey	Monmouth County	Asbury Park City	Freehold Borough	Long Branch City	Red Bank Borough	Neptune Township
White	\$23,918	\$30,248	\$33,124	\$20,282	\$22,209	\$23,766	\$31,569	\$27,190
Black	\$14,437	\$17,409	\$16,941	\$11,751	\$16,278	\$13,867	\$14,547	\$17,052
American Indian/ Alaska Native	\$12,893	\$18,695	\$22,502	\$11,390	\$13,805	\$18,205	\$41,038	\$36,463
Asian	\$21,823	\$27,581	\$32,951	\$14,449	\$20,036	\$22,380	\$27,850	\$27,144
Some other race	\$10,813	\$12,794	\$12,551	\$8,050	\$10,189	\$9,075	\$8,670	\$7,836
Two or more races	\$13,405	\$15,713	\$15,412	\$8,369	\$12,019	\$14,919	\$14,145	\$12,275
Hispanic or Latino	\$12,111	\$14,804	\$18,090	\$9,563	\$10,265	\$11,250	\$14,746	\$12,603

Data Source: U.S. Census Bureau, *Census 2000 Summary File 3 (SF 3)*

Poverty Estimates by School District

Name of School District	Estimated Total Population		Estimated Pop. Of Children 5-17 years		Estimated Number Of Children in Poverty 5-17 years		Percentage of Those Age 5-17 in Poverty	
	2007	2003	2007	2003	2007	2003	2007	2003
<i>Estimates of population and poverty for school districts</i>								
United States							16.5%	16.1%
New Jersey							11.2%	10.0%
Asbury Park City	17,666	17,508	3,508	3,660	901	1,058	25.7%	28.9%
Freehold Borough*	11,453	11,351	1,300	1,356	181	134	13.9%	9.9%
Long Branch City	32,702	32,409	5,205	5,430	849	997	16.3%	18.4%
Red Bank Borough*	12,338	12,248	995	1,040	144	128	14.5%	12.3%
Neptune Township	28,905	28,635	4,685	4,888	587	687	12.6%	14.1%

*Only financially responsible to provide for Kindergarten through 8th grade.

Data Source: U.S. Census Bureau, *Small Area Income & Poverty Estimates*

School lunches

	Free		Reduced	
	2008-2009	2004-2005	2008-2009	2004-2005
New Jersey	329,638	294,150	89,974	86,501
Monmouth County	13,645	11,768	4,067	4,435
Asbury Park	1,384	1,159	1,130	210
Freehold Borough	708	590	114	141
Long Branch	2,643	2,496	624	731
Neptune Township	1,713	1,328	462	433
Red Bank Regional	157	94	31	26

Data Source: NJ Department of Education

E. Employment Statistics

Unemployment Rates (For Cities and Towns above 25,000 population)

Percent Unemployed	U.S.		New Jersey		Monmouth County		Long Branch City		Neptune Township	
	July 2009	Dec. 2005	July 2009	Dec. 2005	July 2009	Dec. 2005	July 2009	Dec. 2005	July 2009	Dec. 2005
In labor force	156,255,000	149,874,000	4,638,750	4,455,954	347,791	327,869	16,677	15,950	15,534	14,526
Percent Unemployed	9.4%	4.8%	9.6%	4.4%	8.8%	4.0%	8.9%	5.4%	11.8%	6.1%

Note: Statistics for the other municipalities were not available due to smaller population size.

Data Source: U.S. Census Bureau, *American Factfinder*; U.S. Department of Labor, Bureau of Labor Statistics

Employment (2000)

	U.S.	New Jersey	Monmouth County	Asbury Park City	Freehold Borough	Long Branch City	Neptune City Borough	Red Bank Borough	Neptune Township
In labor force	138,820,935	4,204,393	311,406	7,113	5,833	15,423	2,640	6,354	13,949
Percentage of people unemployed*	3.7%	3.7%	3.0%	6.7%	4.8%	4.6%	2.5%	3.7%	7.1%

*Percentage of the population 16 years of age or older that are unemployed

Data Source: U.S. Census Bureau, *American Factfinder* (2000)

F. Mortality Statistics

Resident Deaths by Gender and Race

(Municipalities for which residence coding quality is sufficient)

	U.S.		New Jersey		Monmouth County		Asbury Park City		Freehold Borough	Long Branch City		Red Bank	Neptune Township	
	2005	2003	2005	2003	2005	2003	2005	2003	2005	2005	2003	2005	2005	2003
Total	2,448,017	2,448,288	71,102	73,410	5,175	2,853	164	142	127	240	344	169	355	307
Gender														
Male	50.7%	49.1%	47.4%	47.3%	46.3%	46.4%	52.4%	52.1%	44.1%	52.5%	55.8%	42.6%	43.4%	43.3%
Female	49.3%	50.9%	52.6%	52.7%	53.7%	53.6%	47.6%	47.9%	55.9%	47.5%	44.2%	57.4%	56.6%	56.7%
Race														
White	85.7%	85.9%	80.4%	80.0%	87.9%	90.5%	39.6%	40.8%	78.0%	76.3%	76.5%	77.5%	69.0%	72.3%
Black	12.0%	11.9%	12.7%	12.8%	8.2%	6.7%	57.9%	56.3%	17.3%	16.3%	17.4%	20.1%	26.2%	25.1%
Hispanic*	5.4%	5.0%	4.7%	4.6%	2.1%	1.6%	1.2%	1.4%	3.1%	6.3%	5.5%	2.4%	3.7%	2.0%
Asian/ Pacific Islander	17.4%	1.6%	1.7%	1.4%	1.4%	1.1%	0.6%	1.4%	1.6%	0.8%	0.6%	0.0%	0.6%	0.7%
Other Races	0.6%	**	0.3%	1.1%	0.3%	0.1%	0.0%	0.0%	0.0%	0.4%	0.0%	0.0%	0.6%	0.0%
Two or more races	-	-	0.1%	-	0.1%	-	0.6%	-	0.0%	0.0%	-	0.0%	0.0%	-

-No data available.

*Hispanic/Latino residents can be of any race. For example, "White Hispanic or Black/African-American Hispanic."

**National data did not contain a category for other races.

Data Source: New Jersey Department of Health and Senior Services; National Center for Health Statistics, *National Vital Statistics Report*

Resident Deaths by Age

Age	U.S.		New Jersey		Monmouth County		Asbury Park City		Freehold Borough	Long Branch City		Red Bank Borough	Neptune Township	
	2005	2003	2005	2003	2005	2003	2005	2003	2005	2005	2003	2005	2005	2003
Less than 5	1.4%	1.3%	0.9%	1.0%	0.8%	0.5%	1.8%	2.8%	0.0%	1.3%	1.1%	3.0%	0.3%	0.3%
5-14	0.3%	0.3%	0.2%	0.2%	0.1%	0.2%	0.0%	0.7%	0.0%	0.4%	0.3%	0.0%	0.0%	0.3%
15-24	1.4%	1.3%	1.0%	1.0%	0.8%	1.0%	3.0%	4.2%	1.6%	1.3%	1.1%	0.6%	0.6%	0.7%
25-44	5.2%	5.4%	4.6%	4.7%	3.7%	4.1%	8.5%	14.1%	3.9%	7.1%	8.0%	3.0%	3.4%	5.5%
45-64	18.7%	18.1%	16.7%	16.2%	16.3%	14.0%	34.8%	21.8%	15.0%	19.6%	19.0%	11.8%	16.3%	15.0%
65-84	44.3%	45.5%	44.8%	46.4%	44.4%	47.2%	32.3%	40.8%	43.3%	37.5%	48.0%	39.6%	45.9%	47.2%
85 and older	28.7%	28.1%	31.8%	30.4%	34.0%	33.0%	19.5%	15.5%	36.2%	32.9%	22.4%	42.0%	33.5%	30.9%

Data Source: New Jersey Department of Health and Senior Services; National Center for Health Statistics, *National Vital Statistics Report*

G. Maternal Health and Birth Statistics

Births by Mother's Race and Place of Residence (2004)

	U.S.	New Jersey	Asbury Park City	Freehold Borough	Long Branch City	Red Bank Borough	Neptune Township
Total Births	4,115,590	109,365	378	306	543	256	303
Race							
White	56.0%	70.2%	46.0%	87.6%	76.2%	88.3%	47.2%
Black	14.0%	17.0%	51.3%	8.2%	15.1%	7.4%	38.0%
Hispanic**	23.0%	24.6%	40.7%	49.0%	44.2%	43.0%	10.2%
Asian/Pac. Islander	5.6%	8.9%	0.2%	3.6%	2.6%	2.0%	*

* Note: No data provided.

** Data for White, Black, Asian/Pacific Islander, and Other Race do not include Hispanics. Hispanic ethnicity includes persons of any race.

Data Source: The Regional Perinatal Consortium of Monmouth and Ocean Counties; National Center for Health Statistics

Teen Births and Prenatal Care (2004)

	New Jersey		Asbury Park City		Freehold Borough		Long Branch City		Red Bank Borough		Neptune Township	
	2005	2004	2005	2004	2005	2004	2005	2004	2005	2004	2005	2004
Percentage of Teen Births	2.0%	2.1%	6.1%	5.8%	1.8%	2.9%	3.2%	4.8%	3.3%	3.5%	2.6%	*
Percentage of Mothers with no prenatal care	1.1%	1.0%	1.9%	1.6%	2.2%	0.7%	0.2%	1.9%	2.7%	0.8%	1.2%	*

* Note: No data provided.

Data Source: The Regional Perinatal Consortium of Monmouth and Ocean Counties

Percentage of Births by Mother's Age

Age	Asbury Park City		Freehold Borough		Long Branch City		Red Bank Borough		Neptune Township	
	2005	2003	2005	2003	2005	2003	2005	2003	2005	2003
10-14	0.0%	0.2%	0.4%	0.0%	0.0%	0.2%	0.0%	0.4%	0.3%	0.0%
15-17	6.1%	6.8%	1.5%	2.3%	3.2%	6.0%	3.3%	4.6%	2.4%	2.9%
18-19	7.2%	8.8%	3.7%	7.2%	5.8%	5.9%	6.6%	5.4%	6.4%	5.7%
20-24	36.4%	34.0%	24.4%	24.6%	28.4%	27.4%	23.1%	23.8%	21.8%	19.0%
25-29	26.7%	25.4%	27.3%	27.7%	26.4%	23.7%	25.2%	23.0%	21.8%	27.3%
30-34	16.1%	18.3%	28.0%	27.3%	22.8%	22.2%	25.6%	29.2%	27.9%	26.6%
35-39	5.3%	4.6%	13.7%	8.7%	10.9%	12.3%	12.4%	11.7%	15.4%	13.0%
40-44	2.2%	1.5%	1.1%	1.9%	1.9%	16.1%	3.3%	1.7%	4.2%	5.2%
45+	0.0%	0.2%	0.0%	0.4%	0.6%	0.5%	0.4%	0.0%	0.0%	0.3%

Data Source: New Jersey Department of Health and Senior Services

Percentage of Low Birth Weight Babies

	New Jersey		Asbury Park City		Freehold Borough		Long Branch City		Red Bank Borough		Neptune Township	
	2005	2004	2005	2004	2005	2004	2005	2004	2005	2004	2005	2004
Low Birth Weight *	6.4%	8.2%	10.8%	11.1%	4.4%	9.5%	6.4%	8.1%	5.4%	7.0%	7.7%	12.2%
Very Low Birth Weight **	1.5%	2.3%	1.9%	2.6%	0.7%	2.0%	0.6%	2.4%	2.1%	0.8%	1.9%	#

Note: No data provided.

* Weighing 2,499 grams or less

** Weighing 1,499 grams or less

Data Source: New Jersey Department of Health and Senior Services

Tobacco and Alcohol Use and Substance Abuse Percentages

	New Jersey		Asbury Park City		Freehold Borough		Long Branch City		Red Bank Borough		Neptune Township	
	2005	2004	2005	2004	2005	2004	2005	2004	2005	2004	2005	2004
Mothers involved in <i>Tobacco Use</i> during pregnancy	7.3%	8.1%	11.4%	12.2%	5.5%	5.9%	5.6%	5.7%	2.9%	5.9 %	9.8%	10.6%
Mothers involved in <i>Alcohol Use</i> during pregnancy	1.0%	1.1%	1.1%	1.3%	0.0%	0.7%	1.1%	0.7%	0.4%	0.8%	1.1%	*
Mothers involved in <i>Substance Abuse</i> during pregnancy	1.4%	1.4%	2.5%	2.9%	0.4%	0.0%	0.8%	0.7%	0.8%	0.8%	0.3%	*

* Note: No data provided.

Data Source: New Jersey Department of Health and Senior Services

Mother's Marital Status

	New Jersey		Asbury Park City		Freehold Borough		Long Branch City		Red Bank Borough		Neptune Township	
	2005	2004	2005	2004	2005	2004	2005	2004	2005	2004	2005	2004
Percentage of Unmarried Mothers	31.1%	31.6%	77.8%	79.4%	53.1%	47.4%	50.5%	49.9%	56.6%	45.3%	43.0%	40.9%

Data Source: New Jersey Department of Health and Senior Services

H. Communicable Disease Statistics

Persons Living with HIV/AIDS

	Asbury Park City		Long Branch City		Neptune Township	
	Dec. 31, 2008	June 30, 2005	Dec. 31, 2008	June 30, 2005	Dec. 31, 2008	June 30, 2005
Total current cases	395	376	194	198	236	241
Adult/ Adolescent cases	99.0%	96.5%	100.0%	99.5%	100.0%	99.2%
Pediatric cases (Under age 13)	1.0%	3.5%	0.0%	0.5%	0.0%	0.8%

Data Source: New Jersey Department of Health and Senior Services, New Jersey Division of HIV/ AIDS Services

Note: Statistics for Freehold Borough and Red Bank Borough could not be obtained due to NJDHSS security and confidentiality policies.

Adult/Adolescent Transmission Modes of Persons Living with HIV/AIDS

	New Jersey		Asbury Park City		Long Branch City		Neptune Township	
	2008	2004	2008	2004	2008	2004	2008	2004
Males								
Men sex with men (MSM)	31.9%	33.0%	36.0%	35.0%	33.0%	34.0%	37.7%	38.0%
Injection drug user (IDU)	25.0%	16.0%	27.0%	31.0%	26.2%	31.0%	21.5%	26.0%
MSM/IDU	3.6%	2.0%	6.0%	6.0%	4.9%	#	6.2%	8.0%
Heterosexual contact	27.0%	31.0%	26.0%	16.0%	26.2%	#	26.2%	16.0%
Risk not reported/ other	12.4%	17.0%	5.0%	13.0%	9.7%	14.0%	8.5%	12.0%
Females								
Injection drug user (IDU)	25.9%	11.0%	33.0%	40.0%	30.8%	32.0%	32.1%	33.0%
Heterosexual contact	63.1%	77.0%	58.0%	45.0%	61.5%	#	63.2%	53.0%
Risk not reported/ other	11.0%	12.0%	9.0%	15.0%	7.7%	20.0%	4.7%	14.0%

Data Source: New Jersey Department of Health and Senior Services, New Jersey Division of HIV/ AIDS Services

Indicates that number is not known due to small cell size, in accordance with NJDHSS security and confidentiality policies

Note: Statistics for Freehold Borough and Red Bank Borough could not be obtained due to NJDHSS security and confidentiality policies.

Race of Persons Living with HIV/AIDS

	New Jersey		Asbury Park City		Long Branch City		Neptune Township	
	2008	2004	2008	2004	2008	2004	2008	2004
White, non-Hispanic	22.1%	21.9%	18.1%	17.6%	23.6%	22.1%	29.2%	27.0%
Black, non-Hispanic	54.5%	55.5%	71.7%	71.5%	52.9%	47.2%	63.1%	65.6%
Hispanic	21.8%	20.8%	10.2%	9.6%	23.6%	30.8%	7.6%	7.5%
Other/Unknown	1.6%	1.8%	#	1.3%	#	#	0.0%	0.0%

Data Source: New Jersey Department of Health and Senior Services, New Jersey Division of HIV/ AIDS Services

Indicates that number is not known due to small cell size, in accordance with NJDHSS security and confidentiality policies

Note: Statistics for Freehold Borough and Red Bank Borough could not be obtained due to NJDHSS security and confidentiality policies.

Reported Sexually Transmitted Diseases Morbidity

	New Jersey		Monmouth County		Asbury Park City		Freehold Borough		Long Branch City		Red Bank Borough		Neptune Township	
	2008	2004	2008	2004	2008	2004	2008	2004	2008	2004	2008	2004	2008	2004
Syphilis, Primary and Secondary	0.8%	0.6%	0.6%	0.1%	0.6%	0.3%	0.0%	0.0%	0.9%	0.0%	0.0%	0.0%	0.0%	0.0%
Syphilis, Early Latent	1.4%	1.4%	1.4%	0.5%	1.2%	1.0%	0.0%	0.0%	1.7%	0.0%	2.4%	0.0%	0.0%	0.0%
Syphilis, Late and Late Latent	1.3%	1.3%	1.0%	0.3%	1.4%	0.0%	0.0%	1.1%	1.7%	0.0%	0.0%	0.0%	0.0%	2.5%
Syphilis, Congenital	0.0%	0.1%	0.0%	0.0%	0.0%	0.0%	0.0%	0.0%	0.0%	0.0%	0.0%	0.0%	0.0%	0.0%
Gonorrhea	18.5%	26.8%	11.1%	22.8%	9.3%	31.4%	9.6%	16.1%	12.1%	13.5%	7.3%	11.8%	9.5%	47.5%
Chlamydia	78.0%	69.9%	85.9%	76.4%	87.5%	67.3%	90.4%	82.8%	83.6%	86.5%	90.2%	88.2%	90.5%	50.0%

Data Source: New Jersey Department of Health and Senior Services, Communicable Disease Service

I. Child Health Statistics

Lead Poisoning with 6-29 Month-Old Children

<u>Blood Lead Levels</u> (ug/dL)	New Jersey		Monmouth County		Asbury Park City	Freehold Borough	Long Branch City	Red Bank Borough	Neptune Township
	2007	2005	2007	2005	2005	2005	2005	2005	2005
Less than 10	89,987	96,110	5,179	5,224	278	155	319	156	242
10-20	1,026	1,608	49	74	20	11	8	8	9
20-44	226	334	6	12	3	2	1	2	0
45+	14	24	2	2	0	1	0	1	0
Total	91,249	98,076	5,236	5,312	301	169	328	167	251

Data Source: NJ State Department of Health and Senior Services, Family Health Services

Note: Municipality data newer than 2005 is only available for municipalities with populations larger than 35,000.

Lead Poisoning with all Children under age 17

<u>Blood Lead Levels</u> (ug/dL)	New Jersey		Monmouth County		Asbury Park City	Freehold Borough	Long Branch City	Red Bank Borough	Neptune Township
	2007	2005	2007	2005	2005	2005	2005	2005	2005
Less than 10	183,204	191,788	9,206	8,710	669	292	541	297	460
10-20	2,355	3,744	90	130	47	19	11	9	10
20-44	453	731	18	25	7	6	1	2	1
45+	29	42	3	2	0	1	0	1	0
Total	186,041	196,335	9,317	8,867	723	318	553	309	471

Data Source: NJ State Department of Health and Senior Services, Family Health Services

Note: Municipality data newer than 2005 is only available for municipalities with populations larger than 35,000.

Abuse/Neglect (2003)

	Abuse/Neglect Reports	Substantiated Cases	Percent Substantiated
Asbury Park City	537	107	19.9%
Freehold Borough	111	35	31.5%
Long Branch City	277	39	14.1%
Red Bank Borough	78	16	20.5%
Monmouth County Total	3,294	644	19.6%

Data Source: New Jersey Division of Youth and Family Services

Note: Statistics for Neptune Township could not be obtained.

Abuse/Neglect (2002)

	Abuse/Neglect Reports	Substantiated Cases	Percent Substantiated
Asbury Park City	555	121	21.8%
Freehold Borough	103	13	12.6%
Long Branch City	277	42	15.2%
Red Bank Borough	72	12	16.7%
Monmouth County Total	3,219	562	17.5%

Data Source: New Jersey Division of Youth and Family Services

Note: Statistics for Neptune Township could not be obtained.

J. Crime Statistics

Crime Rate

	2008 Crime Rate per 1,000	Change in Crime Rate from 2007	2004 Crime Rate per 1,000	Change in Crime Rate from 2003
New Jersey	26.2	+3.6%	28.1	-1.3%
Monmouth County	23.1	+7.9%	22.2	+0.1%
Asbury Park City	76.3	+17.9%	85.6	+8.6%
Freehold Borough	35.3	+33.7%	32.2	-2.2%
Long Branch City	29.1	+18.3%	28.2	-1.0%
Red Bank Borough	27.4	-1.1%	27.9	+1.0%
Neptune Township	57.9	+6.2%	54.2	+5.8%

Data Source: New Jersey Municipal-County Offense and Demographic Data (2003/2004 and 2007/2008)

Violent Crime

	New Jersey		Monmouth County		Asbury Park City		Freehold Borough		Long Branch City		Red Bank Borough		Neptune Township	
	2008	2004	2008	2004	2008	2004	2008	2004	2008	2004	2008	2004	2008	2004
Murders	376	392	6	9	1	3	1	-	1	1	0	-	1	1
Rapes	1,090	1,328	69	92	6	5	4	4	2	3	4	7	10	10
Robberies	12,694	13,071	527	495	153	196	26	25	64	48	39	20	78	62
Aggravated Assault	14,121	16,126	740	770	159	156	28	26	45	95	14	16	96	63

-No data available.

Data Source: New Jersey Municipal-County Offense and Demographic Data (2003/2004 and 2007/2008)

Nonviolent Crime

	New Jersey		Monmouth County		Asbury Park City		Freehold Borough		Long Branch City		Red Bank Borough		Neptune Township	
	2008	2004	2008	2004	2008	2004	2008	2004	2008	2004	2008	2004	2008	2004
Burglary	40,132	41,032	2,427	2,287	268	342	71	73	180	202	31	46	285	218
Larceny	138,644	140,081	10,590	9,790	622	647	269	219	609	507	231	232	1,082	1,091
Motor Vehicle Theft	20,120	30,314	489	622	56	80	6	22	39	33	7	8	92	94

Data Source: New Jersey Municipal-County Offense and Demographic Data (2003/2004 and 2007/2008)

Other Crime

	New Jersey		Monmouth County		Asbury Park City		Freehold Borough		Long Branch City		Red Bank Borough		Neptune Township	
	2008	2004	2008	2004	2008	2004	2008	2004	2008	2004	2008	2004	2008	2004
Arson	1,222	1,378	42	45	2	6	-	2	2	-	-	1	9	1
Domestic Violence	70,613	76,109	5,284	5,328	379	497	173	159	366	283	149	143	488	505
Bias Crime	876	868	215	161	9	2	7	11	-	2	-	2	18	3

-No data available.

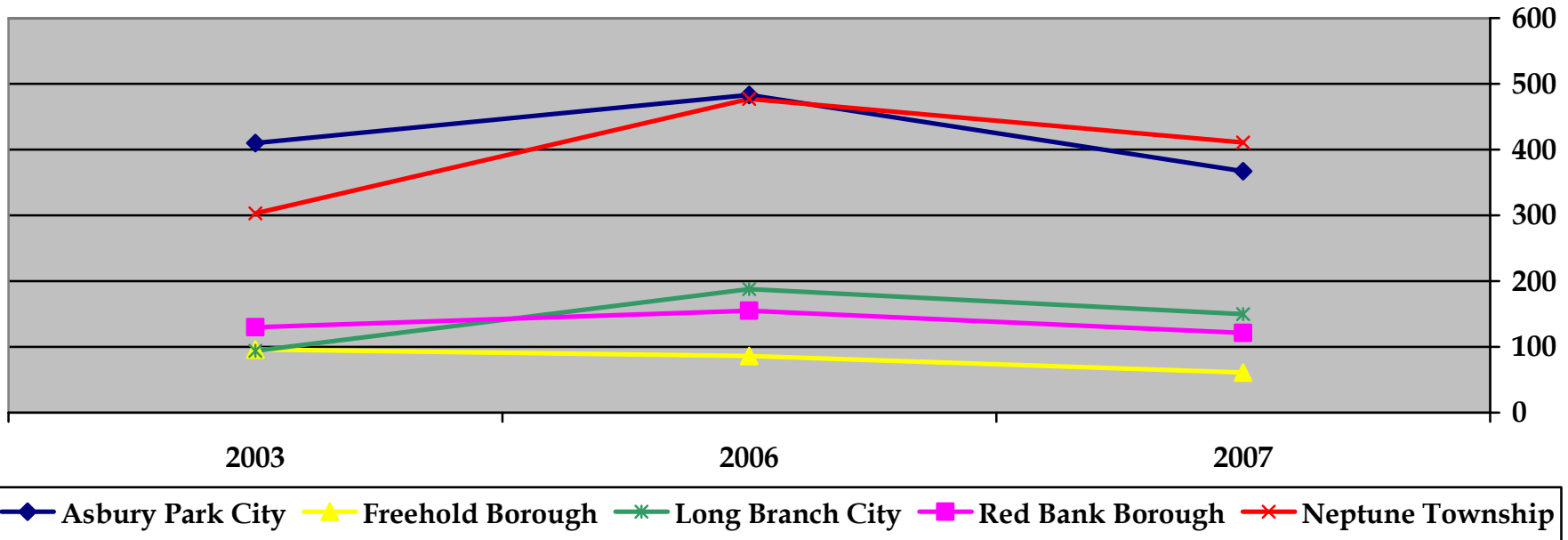
Data Source: New Jersey Municipal-County Offense and Demographic Data (2003/2004 and 2007/2008)

Juvenile Arrests

	Asbury Park City	Freehold Borough	Long Branch City	Red Bank Borough	Neptune Township
2007	367	61	150	121	411
2006	483	86	188	155	477
2003	410	96	94	130	303

Data Source: Monmouth County Youth Services Commission

Juvenile Arrests



Number of Admissions to the Monmouth County Youth Detention Center

Year	Asbury Park City	Freehold Borough	Long Branch City	Neptune City Borough	Red Bank Borough	Neptune Township
2005	108	8	40	3	7	48
2004	131	21	70	5	9	59
2003	120	24	52	2	13	47
2002	144	19	60	3	29	71

Data Source: Monmouth County Youth Services Commission

K. Substance Abuse Statistics

Substance Abuse Admissions by Primary Drug

	Alcohol		Cocaine		Heroin		Marijuana		Others	
	2008	2004	2008	2004	2008	2004	2008	2004	2008	2004
New Jersey	32.3%	28.0%	9.5%	11.0%	38.4%	45.0%	15.0%	12.0%	4.8%	2.0%
Monmouth County	34.5%	32.4%	10.7%	15.1%	34.4%	33.1%	14.3%	14.2%	6.1%	5.1%
Asbury Park City	22.7%	21.0%	20.0%	21.9%	38.0%	37.3%	17.3%	17.8%	2.0%	2.0%
Freehold Borough	40.7%	37.3%	13.8%	17.7%	25.5%	26.6%	11.7%	10.8%	8.3%	7.6%
Long Branch City	33.4%	25.3%	6.8%	12.4%	42.5%	50.2%	14.3%	6.4%	2.9%	5.6%
Neptune Township	30.4%	27.7%	16.4%	20.8%	33.4%	33.3%	15.9%	15.7%	3.8%	2.5%

Note: Red Bank Statistics were not provided.

Data Source: New Jersey Department of Human Services, *Substance Abuse Overview 2004 and 2008*

Treatment Admissions by Municipality of Residence

	Asbury Park City		Freehold Borough		Long Branch City		Red Bank Borough		Neptune Township	
	2008	2004	2008	2004	2008	2004	2008	2004	2008	2004
Total	490	604	145	156	308	232	163	132	365	317
Alcohol	22.7%	21.0%	40.7%	37.8%	33.4%	24.6%	41.7%	43.2%	30.4%	27.8%
Drugs	77.3%	79.0%	59.3%	62.2%	66.6%	75.4%	58.3%	56.8%	69.6%	72.2%

Data Source: New Jersey Department of Human Services, *Substance Abuse Overview 2004 and 2008*

L. Education Statistics

Educational Attainment, 18 to 24 Years

	U.S.		N.J.		Monmouth County	
	2008	2004	2008	2004	2008	2004
Population 18 to 24 years	29,435,332	26,233,020	754,785	693,032	53,369	52,453
Percentage of total						
Less than high school graduate	17.7%	20.2%	15.0%	16.3%	13.1%	18.3%
High School graduate (includes equivalency)	33.5%	33.8%	32.7%	34.1%	33.1%	28.8%
Some college or associate's degree	40.1%	37.0%	39.4%	35.4%	40.7%	35.6%
Bachelor's Degree or higher	8.7%	9.0%	13.0%	14.2%	13.1%	17.3%

Data Source: U.S. Census Bureau, 2004 American Community Survey and 2005-2007 American Community Survey Estimates

Educational Attainment, 25 Years and Over

	U.S.		N.J.		Monmouth County	
	2008	2004	2008	2004	2008	2004
Population 25 years and over	200,030,018	186,534,177	5,864,395	5,659,640	434,516	412,282
Percentage of total						
Less than 9 th Grade	6.4%	6.3%	5.5%	5.3%	3.5%	3.8%
9 th to 12 th Grade, did not graduate	8.7%	9.8%	7.2%	8.5%	4.8%	6.2%
High school graduate (includes equivalency)	28.5%	29.5%	29.5%	30.5%	27.7%	27.7%
Some College, no degree	21.3%	13.0%	17.2%	16.6%	17.5%	18.9%
Associate's degree	7.5%	7.1%	6.3%	5.8%	7.9%	7.2%
Bachelor's degree	17.5%	17.2%	21.6%	20.9%	24.1%	22.8%
Graduate or Professional	10.2%	9.8%	12.8%	12.3%	14.4%	13.6%

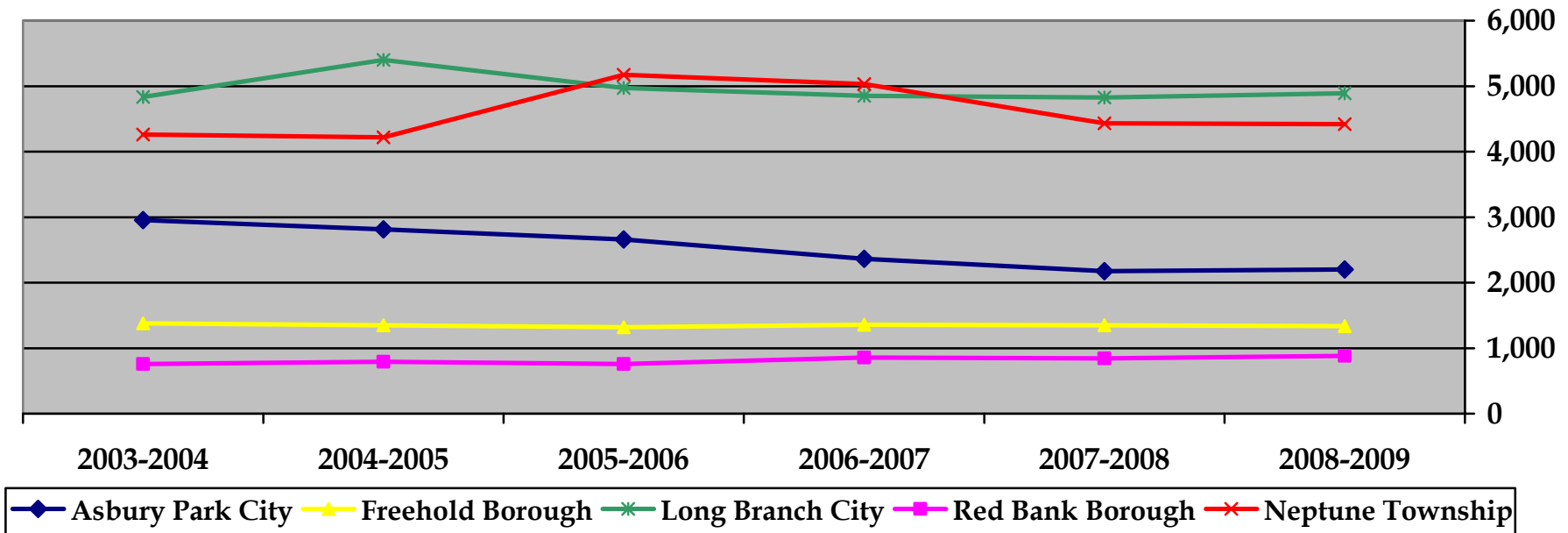
Data Source: U.S. Census Bureau, *2004 and 2008 American Community Survey*

Public School Enrollments

Municipalities	2008-2009	2007-2008	2006-2007	2005-2006	2004-2005	2003-2004
Asbury Park City	2,202.0	2,175.5	2,362.0	2,659.0	2,812.0	2,955.5
Freehold Borough	1,337.0	1,348.0	1,359.0	1,319.0	1,347.0	1,379.0
Long Branch City	4,889.5	4,824.5	4,853.0	4,970.5	5,401.0	4,836.5
Red Bank Borough	882.0	842.0	857.0	760.0	793.0	756.0
Neptune Township	4,418.5	4,432.0	5,033.0	5,172.5	4,217.5	4,261.0

Data Source: New Jersey Department of Education

Public School Enrollments



Average Class Size

	New Jersey		Asbury Park High School		Freehold Borough High School		Long Branch High School		Neptune High School		Red Bank Regional High School	
	07-08	04-05	07-08	04-05	07-08	04-05	07-08	04-05	07-08	04-05	07-08	04-05
Total school	18.9	19.2	15.1	18.8	21.4	20.8	14.4	23.5	20.7	14.8	17.2	17.9
Grade 9	20.6	21.4	18.6	18.7	26.7	26.8	18.9	34.6	21.5	16.3	20.3	17.3
Grade 10	20.7	21.1	15.5	23.3	29.3	28.4	17.3	22.1	22.4	13.2	19.0	21.1
Grade 11	20.3	20.4	20.2	23.2	23.3	32.7	16.1	24.4	21.9	14.6	15.0	18.6
Grade 12	20.6	20.0	13.1	15.1	25.6	22.3	15.3	24.8	19.8	15.5	14.3	20.3
Special Education (ungraded)	8.0	8.8	7.2	3.8	2.5	1.8	4.3	8.5	5.7	*	*	2.6

Note: Students from both Neptune City Borough and Neptune Township attend Neptune High School.

* Special Education statistics were not obtained.

Data Source: New Jersey Department of Education, *New Jersey School Report Card*

Student-Faculty Ratio

	New Jersey	Asbury Park High School	Freehold Borough High School	Long Branch High School	Neptune High School	Red Bank Regional High School
Number of students per faculty member						
2007-2008	11.1	7.3	12.8	9.0	13.2	9.0
2006-2007	11.3	6.9	12.6	8.6	15.8	9.2
2005-2006	11.4	8.1	12.1	8.9	16.2	10.0
2004-2005	11.4	7.7	12.7	12.0	12.3	10.0
2003-2004	11.6	8.0	13.3	9.0	13.5	10.3
2002-2003	11.6	8.2	12.9	8.7	12.6	10.7

Note: Students from both Neptune City Borough and Neptune Township attend Neptune High School.

Data Source: New Jersey Department of Education, *New Jersey School Report Card*

Attendance Rate

	New Jersey		Asbury Park High School		Freehold Borough High School		Long Branch High School		Neptune High School		Red Bank Regional High School	
	07-08	04-05	07-08	04-05	07-08	04-05	07-08	04-05	07-08	04-05	07-08	04-05
Percentage of students present on average each day												
Total School	94.5%	94.4%	84.8%	86.4%	94.4%	94.1%	88.1%	89.5%	91.5%	92.1%	94.2%	92.4%
Grade 9	93.9%	93.7%	81.6%	86.3%	95.2%	95.4%	90.3%	90.8%	92.4%	93.0%	95.3%	94.2%
Grade 10	93.8%	93.7%	86.1%	82.7%	95.0%	94.7%	88.1%	90.4%	91.7%	91.9%	94.6%	93.1%
Grade 11	93.6%	93.4%	85.8%	89.2%	95.0%	93.7%	88.2%	90.5%	91.4%	92.0%	94.5%	92.5%
Grade 12	92.3%	92.1%	88.1%	90.6%	92.5%	91.9%	86.6%	87.1%	90.2%	91.1%	92.7%	90.8%
Special Education (un-graded)	91.0%	91.3%	74.6%	78.7%	92.3%	91.1%	83.6%	84.1%	91.1%	92.9%	89.2%	83.0%

Note: Students from both Neptune City Borough and Neptune Township attend Neptune High School.

Note: The grade level percentages are calculated by dividing the sum of days present in each grade level by the sum of possible days for all students in each grade. The school and state totals are calculated by the sum of days present in all applicable grade levels divided by the total possible days for all students.

Data Source: New Jersey Department of Education, *New Jersey School Report Card*

Scholastic Assessment Test (SAT) Results

	U.S.	New Jersey	Asbury Park High School		Freehold Borough High School		Long Branch High School		Neptune High School		Red Bank Regional High School	
	07-08	07-08	07-08	04-05	07-08	04-05	07-08	04-05	07-08	04-05	07-08	04-05
Students Taking Test												
Total Number Taking SAT	1,518,859	69,478	63	69	284	188	165	132	185	168	204	238
Mathematics												
Average Score	515	514	352	344	575	541	424	453	425	445	529	522
25 th Percentile	430	430	270	270	480	450	370	380	370	375	455	450
50 th Percentile	510	510	350	340	570	520	420	450	420	440	520	520
75 th Percentile	590	600	430	400	670	640	490	515	470	510	610	600
Verbal												
Average Score	502	492	339	351	530	527	411	437	415	429	528	523
25 th Percentile	420	420	270	280	450	455	340	360	350	360	470	450
50 th Percentile	500	490	330	360	530	520	410	430	420	430	530	520
75 th Percentile	580	570	400	400	620	600	480	520	470	495	600	600

Note: Students from both Neptune City Borough and Neptune Township attend Neptune High School.

Data Source: National data gathered from the College Board; State and Municipality data gathered from the New Jersey Department of Education's *New Jersey School Report Card*

Post Graduation Plans

	Asbury Park High School		Freehold Borough High School		Long Branch High School		Neptune High School		Red Bank Regional High School	
	2008	2005	2008	2005	2008	2005	2008	2005	2008	2005
Four-year college/ university	43.3%	20.8%	61.4%	56.6%	23.6%	29.6%	67.4%	47.7%	58.6%	57.9%
Two-year college	33.3%	34.7%	30.3%	31.6%	47.4%	49.8%	20.8%	25.4%	36.2%	30.5%
Other college	***	***	***	***	***	***	***	1.2%	***	***
Other post- secondary school	1.7%	***	1.0%	2.0%	***	4.9%	***	9.3%	***	2.5%
Military	***	1.0%	1.2%	1.2%	1.2%	2.1%	1.3%	1.6%	0.7%	1.1%
Apprenticeship Program	***	***	***	***	***	***	4.1%	***	***	***
Employment	10.0%	36.6%	6.0%	3.7%	27.9%	13.6%	4.3%	14.7%	0.4%	7.4%
Undecided	11.7%	6.9%	***	0.8%	***	***	***	***	4.1%	0.7%
Other	***	***	***	4.1%	***	***	2.1%	***	***	***

*** No percentage was recorded.

Note: Students from both Neptune City Borough and Neptune Township attend Neptune High School.

Note: Percentages were derived by dividing the number of respondents in a given category by the total number of graduates

Data Source: New Jersey Department of Education, *New Jersey School Report Card*

Total State Education Aid by District

School Year	Asbury Park City	Freehold Borough	Long Branch City	Red Bank Borough	Neptune Township
2009-2010	\$57,632,816	\$9,223,870	\$40,594,808	\$2,518,251	\$32,632,790
2008-2009	\$65,830,568	\$9,150,405	\$48,320,456	\$3,748,044	\$38,707,408
2007-2008	\$57,955,674	\$7,580,024	\$42,831,959	\$2,346,899	\$36,290,733
2006-2007	\$58,127,605	\$6,394,711	\$43,712,097	\$1,979,028	\$37,376,138
2005-2006	\$58,709,576	\$6,426,225	\$44,948,513	\$2,002,228	\$38,898,632

Data Source: New Jersey Department of Education

Note: Excludes Debt Service

District Factor Groups (2000)

District	District Factor Groups
Asbury Park City	A
Freehold Borough	B
Long Branch City	B
Neptune City	CD
Red Bank Borough	CD
Neptune Township	CD

Data Source: New Jersey Department of Education

A=Lowest possible ranking

J=Highest possible ranking